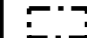

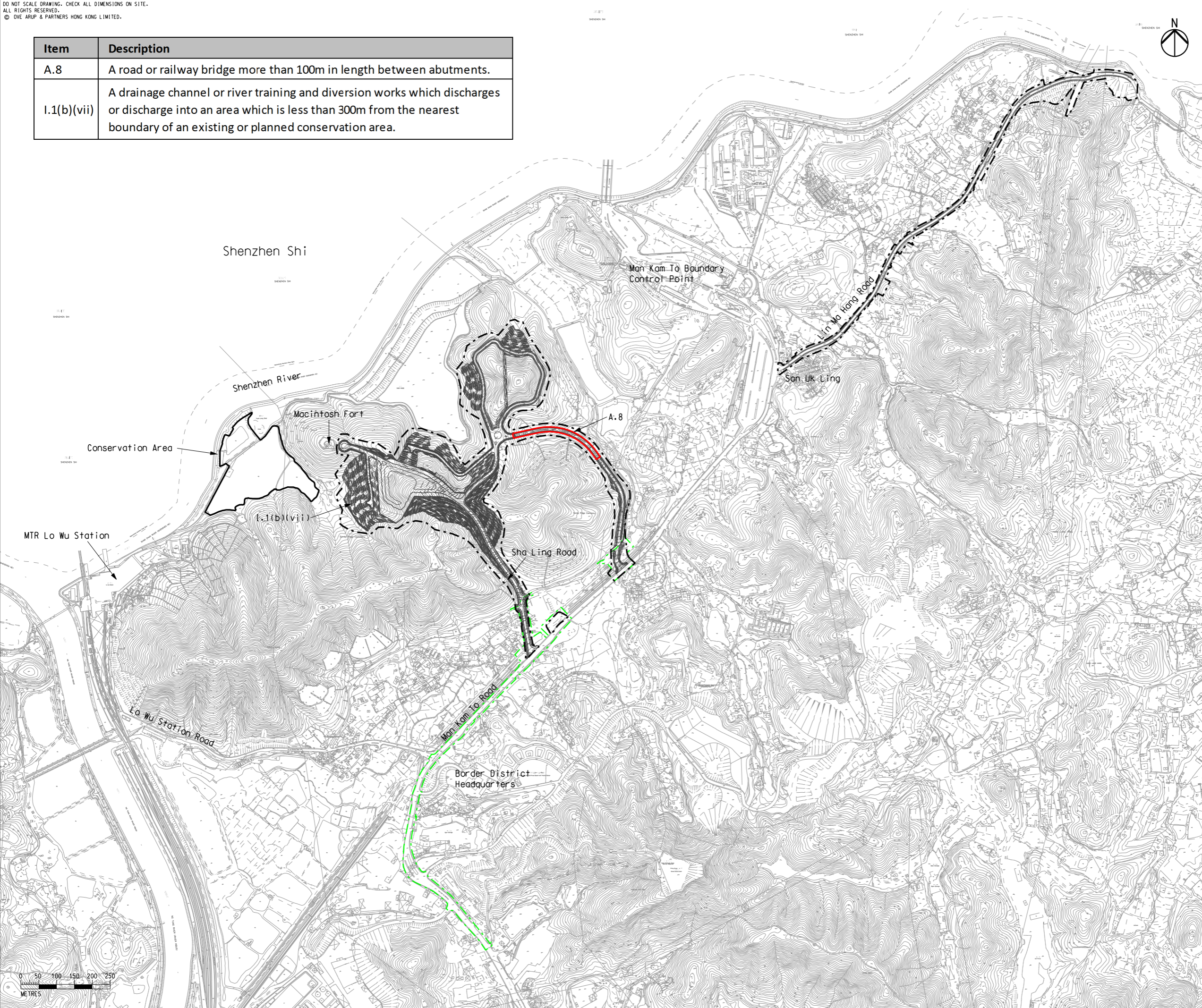


Item	Description
A.8	A road or railway bridge more than 100m in length between abutments.
I.1(b)(vii)	A drainage channel or river training and diversion works which discharges or discharge into an area which is less than 300m from the nearest boundary of an existing or planned conservation area.

Legend

-  Project Boundary
-  Utilities Construction

Printed by : 3/1/2016  
 Filename : G:\env\project\231448\13 Drawing Deliverables\Reports\015 EIA\20160229 Revised FinalEIA\_v1\Ch 1 Intro\Figure 1.4 - Locations of Designated Projects.dgn



G	SEVENTH ISSUE	GL	02/16
F	SIXTH ISSUE	GL	01/16
E	FIFTH ISSUE	GL	12/15
D	FOURTH ISSUE	GL	10/15
Rev	Description	By	Date

Consultant  
**ARUP**

Contract No. and Title:  
 Agreement No. CE 1/2013(CE)  
 Site Formation and Associated  
 Infrastructural Works for Development  
 of Columbarium, Crematorium and  
 Related Facilities at Sandy Ridge  
 Cemetery - Design and Construction

Drawing title  
**Locations of  
 Designated Projects**

Drawing no.	Figure 1.4		Rev.	G
Drawn	Date	Checked	Approved	
GL	02/16	EL	ST	
Scale	1:10000 @A3		Status	PRELIMINARY

COPYRIGHT RESERVED

